

DIVARIO PA-1

OFFERING: High Density Residential Development Ground



Master Planned Community

- 3,196 Residential Units- Fully Entitled and Recorded City Development Agreement.
- Adjacent to Sunbrook Golf Course, Las Palmas Resort, The Highlands, WorldMark.
- Multiple Zoning Uses: High, Medium, and Low Density; 26 Acres Commercial.
- 4 to 15 Units Per Acre. Open Space Allocation for Hiking & Biking Trails, Parks.
- Back Drop of Pine Valley Mountains and Snow Canyon State Park.

Marketed by:

Rod Packer

435-680-2562

pack@sginet.com



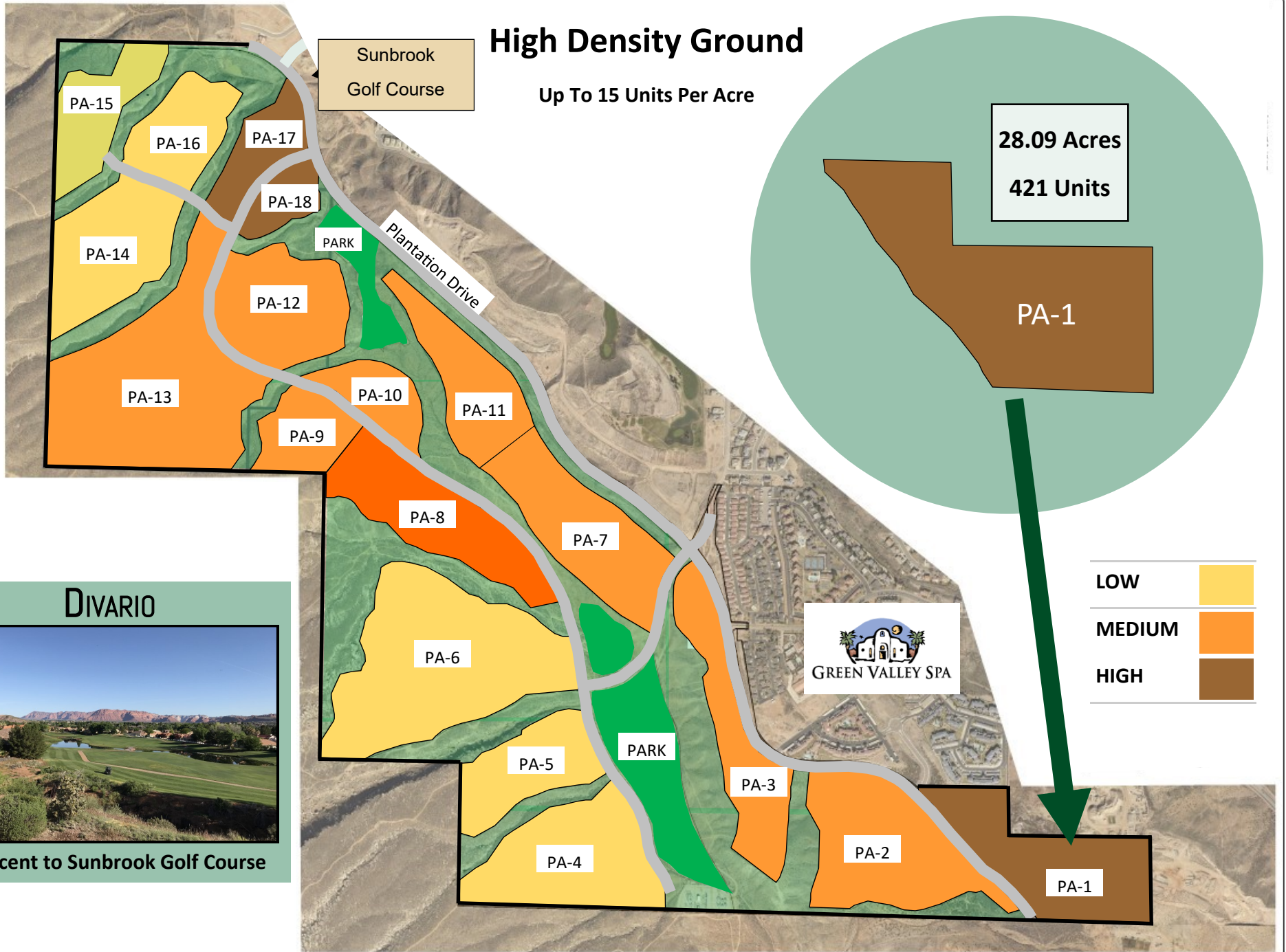
Views!

DIVARIO — Sunbrook Drive & Plantation Drive



High Density Ground

Up To 15 Units Per Acre



DIVARIO



Adjacent to Sunbrook Golf Course

Property Lines Are Approximated





EXISTING POWER
SWITCH BOX

EXISTING 12'
WATER LINE

EXISTING POWER
SWITCH BOX

OPER SPACE
3.4 ACRES

EXISTING 8'
SEWER LINE

PA-2
35.96 ACRES

PA-1
29.2 ACRES

